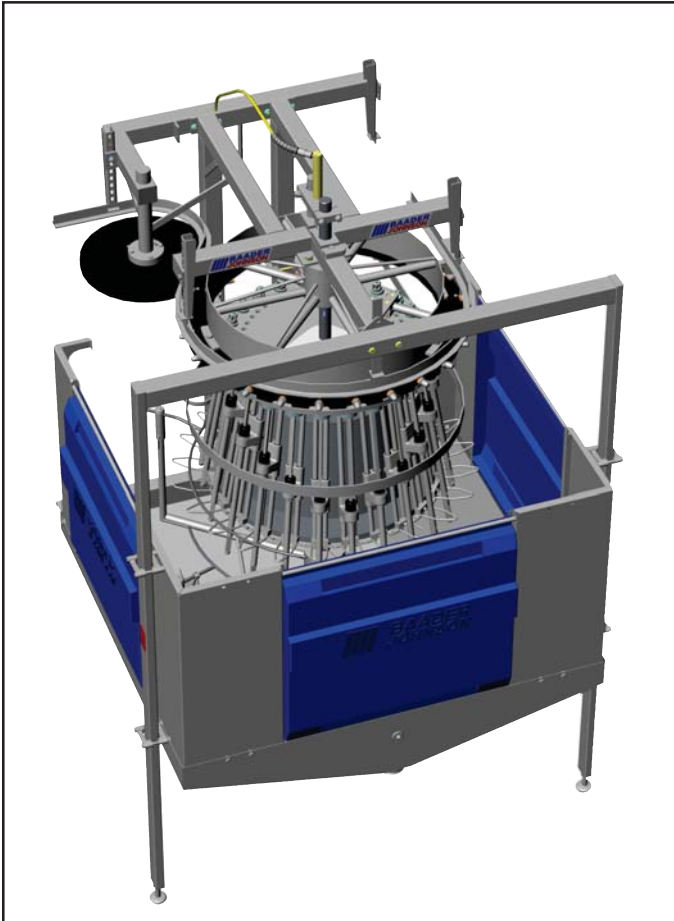


Designed to
Reduce Cropping
Damage!



BAADER 1424 Carcass Care[®] Cropper

- Maintains better than 95% efficiency of crop and trachea removal
- Operates at all line speeds with any bird size
- Drastically reduces labor costs by replacing repetitive manual crop removal
- Enclosed cabinet for safety, spray containment and easy cleaning
- Vacuum option reduces clavicle bone damage
- USDA approved



Simple, Durable and Effective
**CARCASS
BAADER
CARE[®]**



BAADER 1424 Carcass Care® Cropper

■ Technical Data

Operating Range		US	Metric
	Min	3 Lb	1.4 Kg
	Max	8 Lb	3.6 Kg

Note: The indicated limits of the working ranges may vary as a function of the proportion, quality and nutritional condition of the bird. In order to achieve an optimal result, the machine should be adjusted within its working range to the bird size principally processed.

Capacity	Min	42 bpm (2,500 bph)
	Max	160 bpm (9,600 bph)

Note: All others subject to approval by Baader-Johnson

Machine Options

24 Heads, 6" on center-up to 140 BPM
18 Heads, 8" on center-up to 105 BPM

Weights, Dimensions and Volume

<i>Machine Weight:</i>		1900 Lb	850 Kg
<i>Shipping Weight:</i>		2100 Lb	950 Kg
<i>Shipping Dims:</i>	L	130"	3400 mm
	W	80"	2100 mm
	H	80"	2100 mm
<i>Shipping Volume:</i>		583 ft ³	17 m ³

Water

<i>Process Water Reqs:</i>	V	5 GPM	19 L/min
	P	40 PSI	3 bar
	T	60°F	16°C
<i>Process Water Connection:</i>		1/2" FNPT	1/2" FNPT
<i>Backflush Water Reqs:</i>	V	3 GPM	11 L/min
	P	40 PSI	3 bar
	T	100°F	38°C
<i>Backflush Water Connect:</i>		1/2" FNPT	1/2" FNPT

Vacuum

<i>Vacuum Requirements:</i>	V	150 ACFM	255 m ³ /hr
	P	16" Hg	-0.5 bar
<i>Vacuum Connections:</i>		1-1/4" FNPT	1-1/4" FNPT

Electrical

<i>Std. Elect. Requirements:</i>	V	230/460V	230/400V
	Ph	3 Ph	3 Ph
	Hz	60 Hz	50 Hz
	Amp	1.25/2.5 A	1.25/2.5 A
	HP	0.5 Hp	0.37 Kw

Note: All others subject to approval by Baader-Johnson

Mechanical

<i>Torque Requirements:</i>		450 ft lb	615 Nm
<i>Shackle Length:</i>	Min	26"	661 mm
	Max	34"	864 mm
	Track Height Min	Min	84"
	Max	115"	2921 mm
<i>Shackle Types:</i>		Plastic BJ rigid shackle	
		Plastic & Stainless BJ 2-piece	

Note: All others subject to approval by Baader-Johnson

Note: All rigid shackles to be mounted with neutral clips or clips pointing away from the machine.

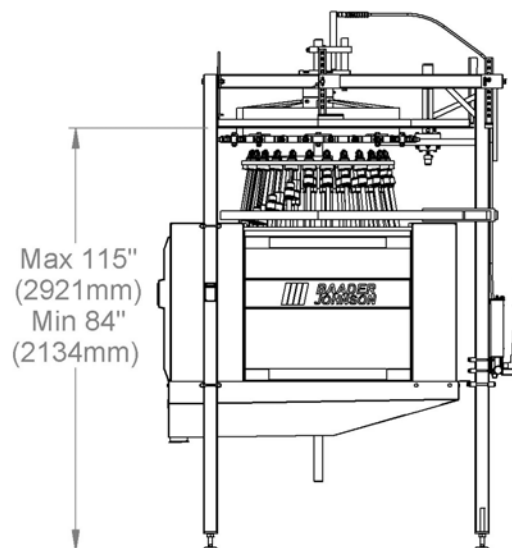
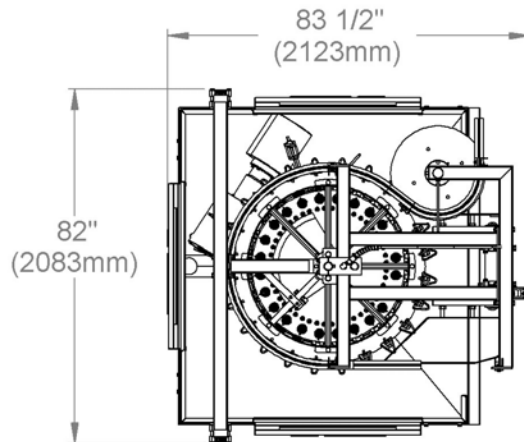
<i>Track Types:</i>	T-rail (50mm)	
	I-Beam (3")	
	Round Pipe Sch 80	42 x 5mm

Note: All others subject to approval by Baader-Johnson

<i>Chain Types:</i>	Log chain (1")	
	Log chain (1-1/2")	
	X 348	

Note: All others subject to approval by Baader-Johnson

Note: Chain stretch not to exceed 4%



Illustrations and dimensions are approximate and not binding. Subject to design changes in the interest of technical progress. Actual scope of supply is specified in our quotations and order confirmations and may differ from descriptions and photos in this leaflet.

Attention!

For the illustration of technical details the safety devices and protection mechanisms are partly not shown in operative condition. When operating the machine, all corresponding devices and instructions referring to the safety of the machine must be utilized and/or observed. (Protective panels and safety guards removed for photograph.)



Johnson Food Equipment, Inc.
Member of the BAADER Group
2955 Fairfax Trafficway Kansas City, KS 66115
Tel: 913-621-3366 Fax: 913-621-1729
Email: sales@baader-johnson.com
Web Site: www.baader-johnson.com
800-288-3434 U.S. & Canada