



Baader 1902 Carton Weigher and Reject Station Machines

The Carton Weigher and Reject Station Machine include:

- Robust Design
- Hermetically Sealed Stainless Steel Loadcell
- Zero Clearance
- Stainless Steel Angle Construction
- Sanitation Friendly
- User Friendly Touch Screen



Baader 1902 Carton Weigher and Reject Station Machines

■ Technical Data

• Capacity

Up to 40 cartons or totes per minute depending on size of piece and length of weigh belt. Maximum carton or tote weight: 100 lbs (45 kg).

• Accuracy:

Zone edge tolerance of 0.01 lbs. (4.5g) (depending on belt speed and weigh belt configuration).

• Conveyor length & width

Reject Station - Length: 43" (1100 mm)
Belt Width: 20" (510 mm)

Check Weigher - Length: 53" (1350 mm)
Belt Width: 20" (510 mm)

• System Belt Speed

200 fpm (standard) depending on application

• Conveyor Belts:

Modular plastic belt (Intralox type)

• Height Adjustment

Adjustable from 27" (690 mm) to 36" (915 mm)

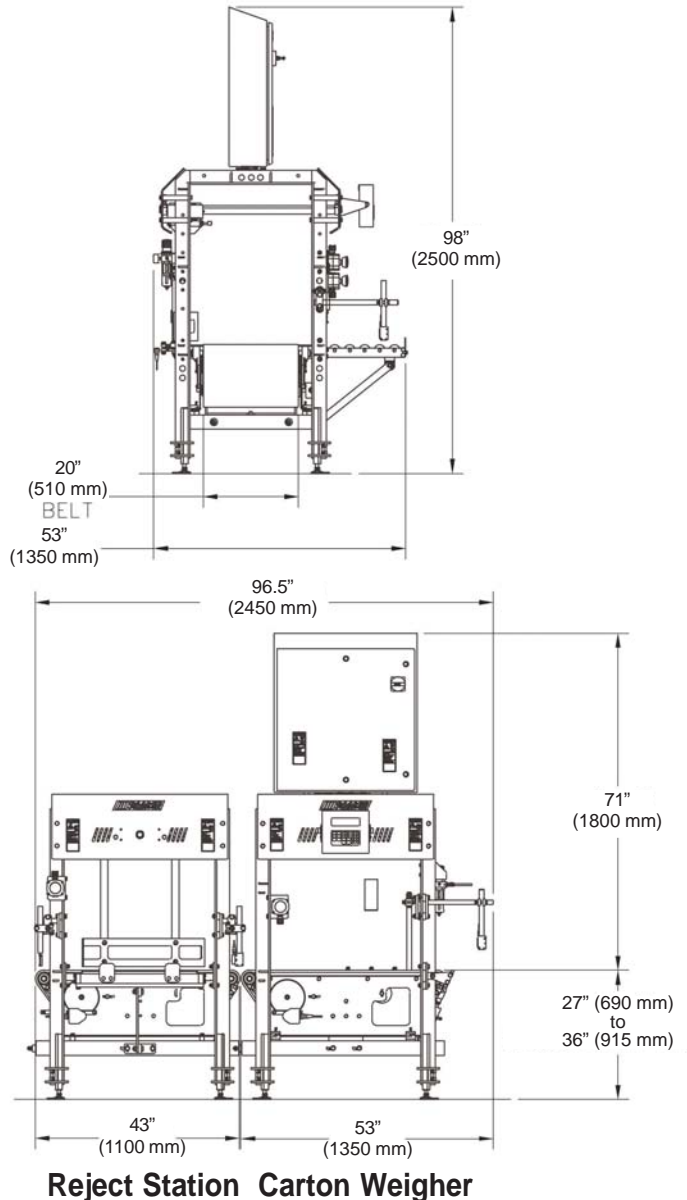
• Materials of Construction

USDA approved materials. Tolerates all commercially available cleaning detergents used to pH between two and ten.

• Utility Requirements

Air: 10 SCFM @ 80 PSI (dry)

Power: 208vac 60Hz 3ph 2Kw



Illustrations and dimensions are approximate and not binding. Subject to design changes in the interest of technical progress. Actual scope of supply is specified in our quotations and order confirmations and may differ from descriptions and photos in this leaflet.

Attention!

For the illustration of technical details the safety devices and protection mechanisms are partly not shown in operative condition. When operating the machine, all corresponding devices and instructions referring to the safety of the machine must be utilized and/or observed. (Protective panels and safety guards removed for photograph)



Johnson Food Equipment, Inc.
Member of the BAADER Group
2955 Fairfax Trafficway Kansas City, KS 66115
Tel: 913-621-3366 Fax: 913-621-1729
Email: sales@baader.johnson.com
Web Site: www.baader-johnson.com
800-288-3434 U.S. & Canada